



# MAJOR

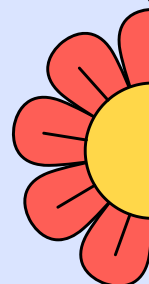
# DISCOVERY

FALL 2024  
NOV 6

your monthly guide to declaring a major, featured events, and resources

## intentional post-election support

- **Wednesday, November 6, 12-5 PM, UHALL4600** BCLA invites students, faculty, and staff to a post-election support space for quiet reflection, processing, or watching election results in a peaceful setting.
- **Nov 6 - Nov 8: Check LEO for various locations across campus**



## department events

- **Monday, Nov 18, 2:00 pm:** K-Pop Across Asia/America, with Dr. Mimi Thi Nguyen and Dr. Andrea Acosta
- **Tuesday, Nov 12, 12:00 pm:** Melanie Cervantes: Art, Social Movements and Political Expression

## bellarmine forum events

- **Tuesday, Nov 12, 3:40 pm:** Election Post-Mortem

## international ed week

- **BCLA Photo Contest:** Submit photos from your Study Abroad experience [here](#) and stand to win Amazon gift cards.

## important dates

- **Friday, Nov 8:** Spring 2025 Registration begins
- **Monday, Nov 11:** Summer 2025 Schedule of Classes available
- **Friday, Nov 15:** Last day to withdraw from classes or apply for credit/no credit grading
- **Monday, Nov 25:** Summer 2025 Registration begins

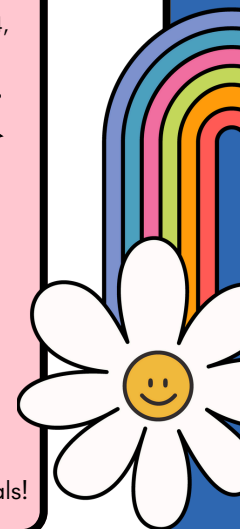
## testimonial

Majoring in the liberal arts can open up many different career paths:

- Learn how LMU English grad Sinclaire Hicks'24, secured her role as a Retail Sales and Execution Specialist at Chobani:



Meet with a [LMU career advisor](#) to explore majors that best suit your career interests/goals!





## spring registration checklist

- ★ review Spring 2025 schedule of classes and registration timeslot via PROWL
- ★ have a registration hold? to lift:
  - **Advisor holds**, complete Brightspace workshop or meet with a BCLA advisor/faculty advisor
  - **Associate Dean holds**, consult your email for details
  - **All other holds**, contact the office that placed the hold
- ★ make a BCLA advising appointment for support with course planning
- ★ meet with your faculty advisor to discuss major course options



## bcla uncovered: core curriculum!

Through Core classes, you can explore a range of disciplines, gain transferable skills, and discover new academic interests to guide your major exploration!

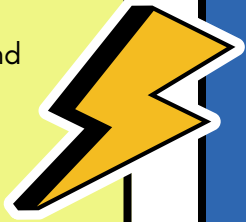
### LMU Core Requirements:

#### Foundations

- designed to be taken year 1 and 2
- helps students develop fundamental reasoning and communication skills to confront important issues about values, faith, justice, identity etc.

#### Explorations

- designed to be taken year 2 and 3
- engages students in a critical examination of self, society, and the world through various disciplinary perspectives (e.g. arts, sciences, humanities)



#### Integrations

- designed to be taken year 3 and 4
- encourages students to develop a mindful engagement with the world
- builds upon skills and knowledge gained in Foundations and Explorations courses

#### Engaged Learning

- integrates classroom studies with experiences beyond the classroom
- challenges students to think more critically and deeply about the real-world applications of what they study